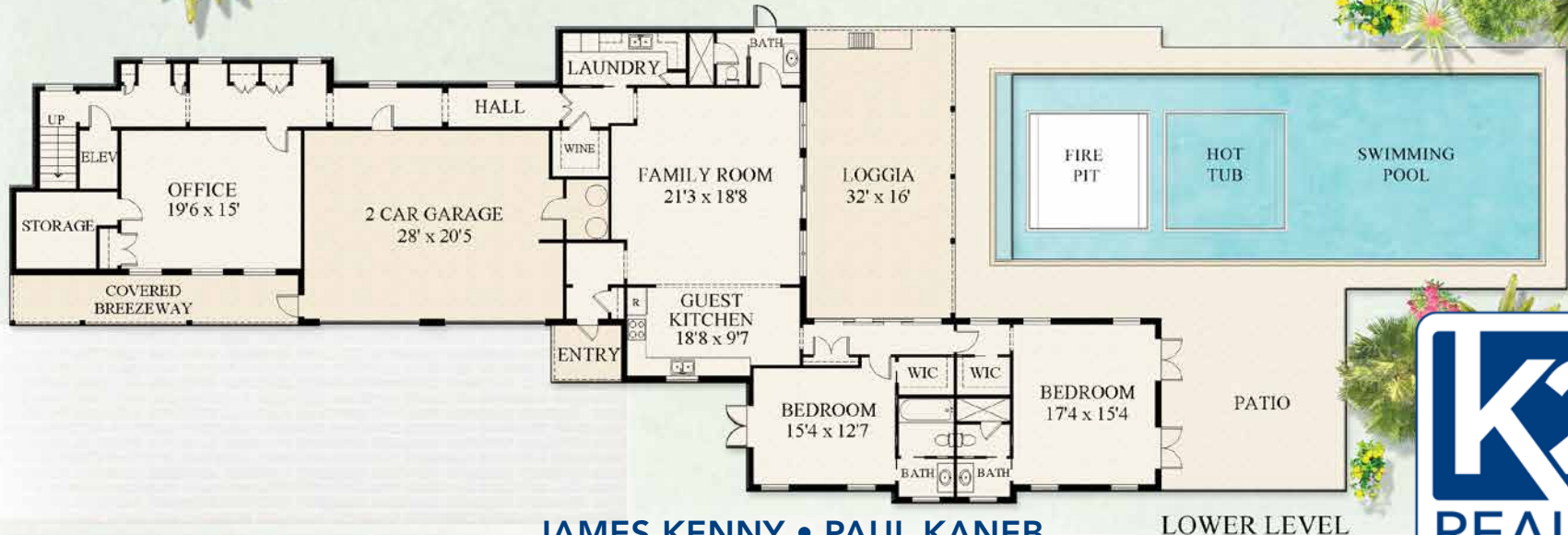


11432 TURTLE BEACH ROAD

Under Air: 7,823 Sq. Ft. | Total: 9,723 Sq. Ft.
5 Bedrooms | 5 Full 2 Half Bathrooms



[CLICK HERE TO TAKE 3D TOUR](#)



JAMES KENNY • PAUL KANEB
OFFICE: 561-691-1223 • WWW.K2-REALTY.COM



Notice: Property outlines are approximate measurements. Renderings are for marketing purposes only. All measurements, features and specifications are approximate. The accuracy of this information is subject to errors, omissions and changes. An architect should be contacted for actual measurements, features and specifications.